



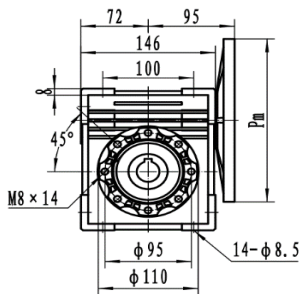
DATOS MOTOR

| | |
|----------------------|--------|
| POTENCIA | 3HP |
| REVOLUCIONES | 1760 |
| FRECUENCIA | 60HZ |
| TORQUE MOTOR NOMINAL | 12,2 |
| CARCASA (PAM) | 90(B5) |
| TIPO BRIDA | FF-165 |
| EFICIENCIA MOTOR | IE 2 |

DATOS REDUCTOR

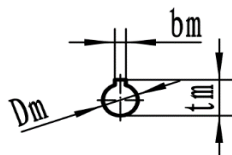
| | |
|----------------------------|-----------|
| REFERENCIA | 541112 |
| TIPO | ORTOGONAL |
| MODELO | FCN |
| MATERIAL | ALUMINIO |
| CARCASA | 63 |
| RELACION DE TRANSMISION i: | 7,5 |
| VELOCIDAD SALIDA | 234,67 |
| TORQUE MAXIMO | 129 |
| TORQUE OPERACIÓN | 81 |
| FACTOR DE SERVICIO | 1,6 |

PLANOS REDUCTOR

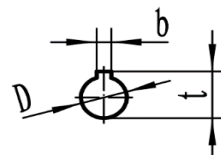


FCN 63

Input shaft hole



Output shaft hole



| Dimensions of output shaft | | |
|----------------------------|-------|------|
| D H7 | b D10 | t |
| 25 | 8 | 28.3 |

| | Pm | Dm | bm | tm |
|-------|-----|----|----|------|
| 63B5 | 140 | 11 | 4 | 12.8 |
| 71B5 | 160 | 14 | 5 | 16.3 |
| 71B14 | 105 | | | |
| 80B5 | 200 | 19 | 6 | 21.8 |
| 80B14 | 120 | | | |
| 90B5 | 200 | 24 | 8 | 27.3 |
| 90B14 | 140 | | | |

